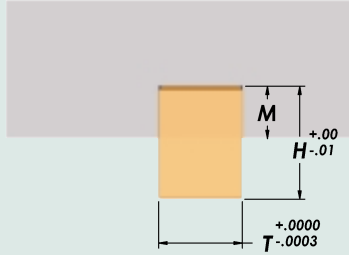
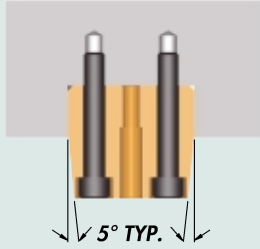
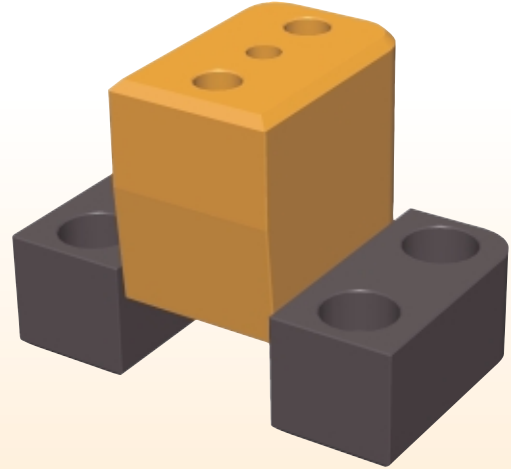
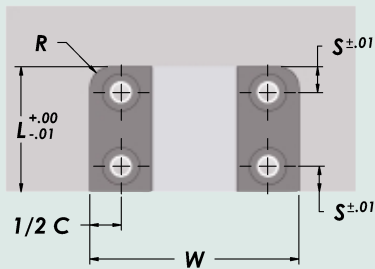
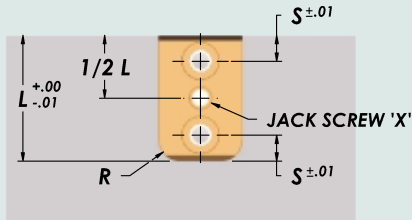




Guide Locks

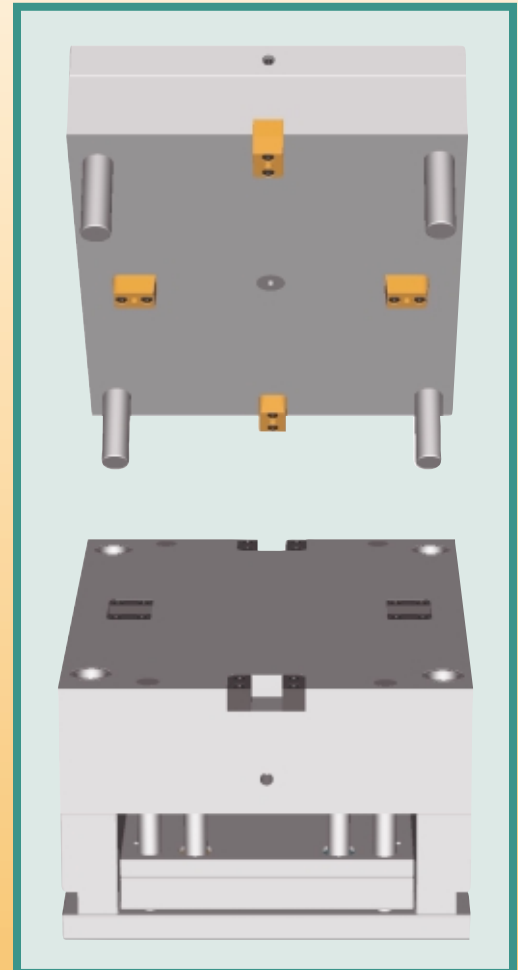
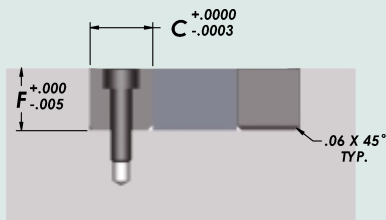


Because Guide Locks can be used inside the mold as well as at the parting line, DMS has added a jack screw hole to the male interlock. This allows removal without damage to the mold. Also added is a 5° angle on each end of the male.



Male:
AISI D2 (58-60 Rc)
Titanium Nitride Coated
78-80 Rc

Female:
AISI 1045 (60-62 Rc)
Black Oxide Finish



Catalog Number	W +0.000 -0.010	L +0.000 -0.010	T +0.0000 -0.0003	H +0.000 -0.010	M	C +0.0000 -0.0003	F +0.000 -0.005	S +0.010 -0.010	R	X Jack Screw	SHCS	
											MALE (2)	FEMALE (4)
GL-1.5	1.500	1.000	.500	.850	.375	.500	.500	.250	.187	#6-32	#10-32 X 1"	#10-32 X 5/8
GL-2.5	2.500	1.500	1.000	1.350	.625	.750	.750	.310	.250	1/4-20	1/4-20 X 1-1/2	1/4-20 X 7/8
GL-3.5	3.500	2.000	1.500	1.730	.750	1.000	1.000	.440	.375	3/8-16	3/8-16 X 2"	3/8-16 X 1-1/4
GL-4.5	4.500	2.500	2.000	2.100	.875	1.250	1.250	.560	.500	3/8-16	1/2-13 X 2-1/4	1/2-13 X 1-1/2