

SPECIFICATIONS

MODEL		OA-3260	OA-3280	OA-32100	OA-32120	OA-32160	OA-4060	OA-4080	OA-40100	OA-40120	OA-40160
Table clamping surface (WxL) inch	W	32					40				
	L	68.9	86.8	106.4	126	165.4	68.9	86.8	106.4	126	165.4
Maximum longitudinal travel	inch	65	84.6	104.3	124	163.4	65	84.6	104.3	124	163.4
Maximum cross travel	inch	33.86					41.73				
Maximum grinding area inch	W	31.5					39.4				
	L	59	78.7	98.4	118	157.5	59	78.7	98.4	118	157.5
Max. distance between spindle center to table		31.5/39.4(optional)					31.5/39.4(optional)				
Down feed per division (MPG)	inch	0.0001,0.0005,0.001					0.0001,0.0005,0.001				
Down feed per revolution (MPG)	inch	0.01,0.05,0.1					0.01,0.05,0.1				
Auto downfeed Servo motor	inch	0.0005-0.002					0.0005-0.002				
Longitudinal table speed	fpm	10-105					10-105				
Crossfeed intermittent	inch/feed	0.004-1.57					0.004-1.57				
Crossfeed continuous	fpm	0.9-5					0.9-5				
Crossfeed per division	inch	0.0001,0.001,0.005					0.0001,0.001,0.005				
Grinding wheel dimension (ODxIDxWidth)		16x5x2 / (16x5x3 optional)					16x5x2 / (16x3x3 optional)				
Spindle speed(50/60HZ)	R.P.M.	1450/1720					1450/1720				
Spindle motor	H.P.	15/25(optional)					15/25(optional)				
Hydraulic pump motor	H.P.	7.5	7.5	7.5	7.5	10	7.5	7.5	7.5	10	10
Total power motor	H.P.	24/34	24/34	24/34	24/34	26.5/36.5	24/34	24/34	24/34	26.5/36.5	26.5/36.5
Floor space (HxWxL) inch	L	236	276	315	362	452	236	276	315	362	452
	W	122					130				
	H	110/118(optional)					110/118(optional)				
Net weight(approx)	lbs	26400	29040	31680	35200	42020	28380	31680	34980	38390	46200
Chuck weight	lbs	1550	2070	2590	3100	4140	1940	2600	3240	3170	4230
Maximum workpiece on chuck	lbs	3300	3960	4400	4400	5060	4400	4840	5280	5500	5500

Manufacturer reserves the right to change or improve specifications without notice.

STANDARD ACCESSORIES

1. Grinding wheel 1 Pc.
2. Wheel flange 1 set.
3. Coolant system 1 set.
4. Tools with box 1 set.
5. Balancing arbor 1 Pc.
6. Wheel extractor 1 set.
7. Chiller for hydraulic oil 1 set.
8. Hydro static system 1 set.

OPTIONAL ACCESSORIES

1. Vertical spindle grinding equipment
2. Electro-magnetic chuck
(Includes rectifier with automatic demagnetizing.)
3. Spare wheel flange
4. Balancing stand
5. Halogen machine lamp
6. Coolant system with paper filter
7. Magnetic dust separator
8. DRO 1 or 2 Axis
9. Variable speed spindle

SUPERTEC MACHINERY, INC.

6435 ALONDRA BLVD, CA 90723

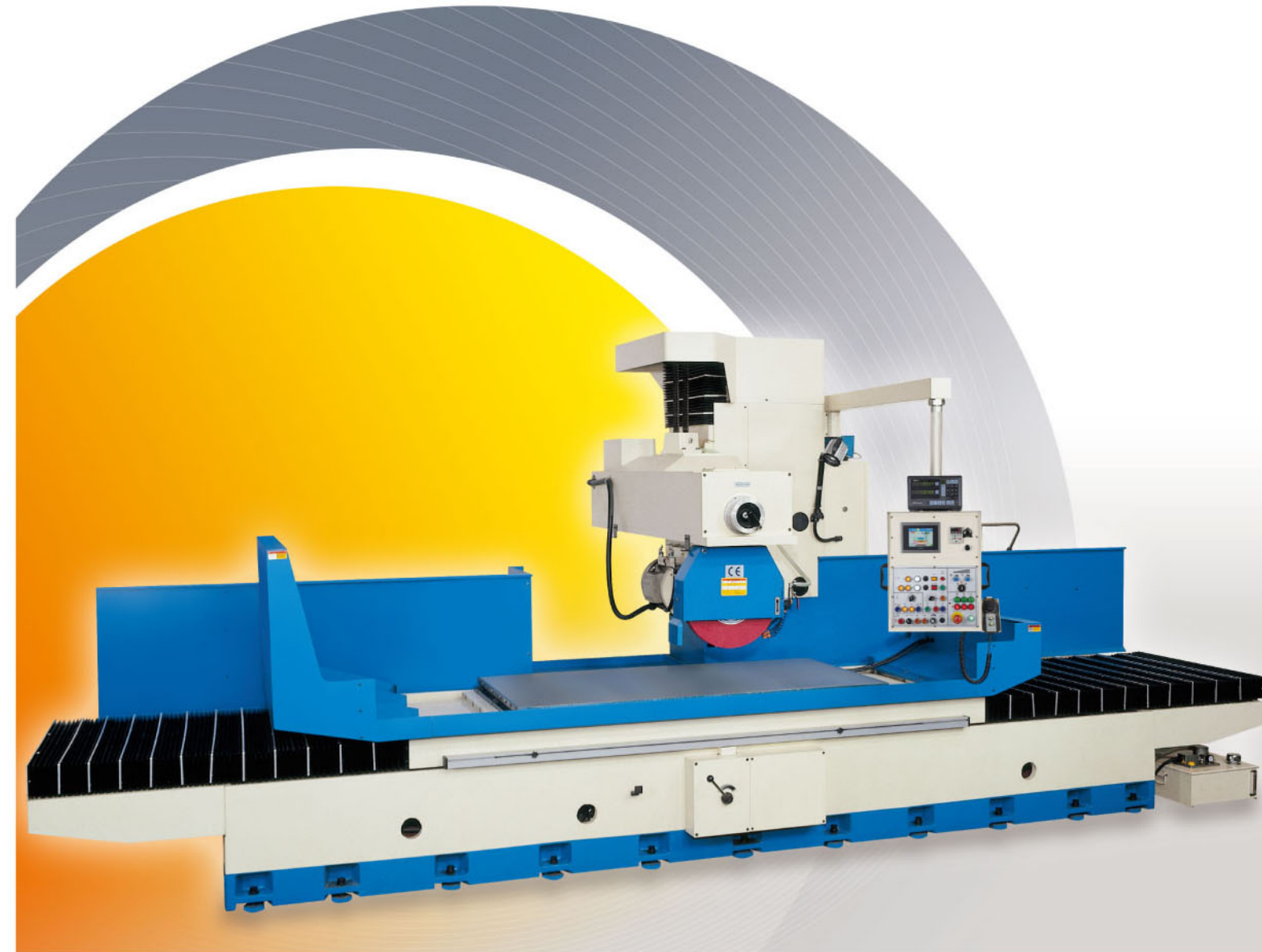
(562)220-1675 PH

(562)220-1677 FAX

www.supertecusa.com

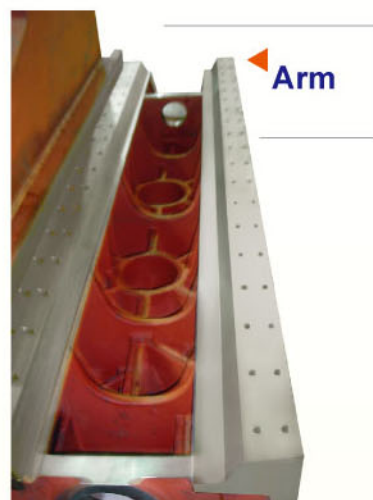
E-MAIL:info@supertecusa.com

ST *Supertec*



Over Arm Surface Grinder

DOVETAIL / SURFACE PRECISION SURFACE GRINDER



Arm



Column

Rigid column structure
Honey comb type (Left/Right)
Double layer type (Front / Rear)

Table

Hydrostatic ways with dual hydraulic cylinders



FEATURES

■ RIGID CONSTRUCTION

Manufactured with strong ribs, top grade castings, stress-free annealed cast components which assures the highest accuracy and long life.

■ DIRECT DRIVE INTERCHANGEABLE SPINDLE

Which is supported by super-precision preloaded bearings with sealed lubrication, it offers a top quality grinding finish.

■ PRECISION SCRAPED TURCITE-B WAYS

Double-Vee ways of table are coated with TURCITE-B and then scraped for effortless and smooth traverse.

■ NEEDLE ROLLER WAYS

The steel guideways of column and head-bracket are hardened and ground. Precise preloaded needle roller bearings SKC 3 have been equipped between slideways to ensure the minimum downfeed and crossfeed can be achieved.

■ AUTOMATIC GRINDING CYCLE: (optional)

Incorporates automatic downfeed, auto stop for sizing, spark-out to 9 times, table auto stop at extreme left end for easy loading, plunge or traverse grinding are both applicable.

■ AUXILIARY SWIVELLING VERTICAL GRINDING SPINDLE: (optional)

The machine can be equipped with a vertical grinding spindle mounted on a crossrail which can be adjusted $\pm 60^\circ$ for grinding dovetails and other of slideways.

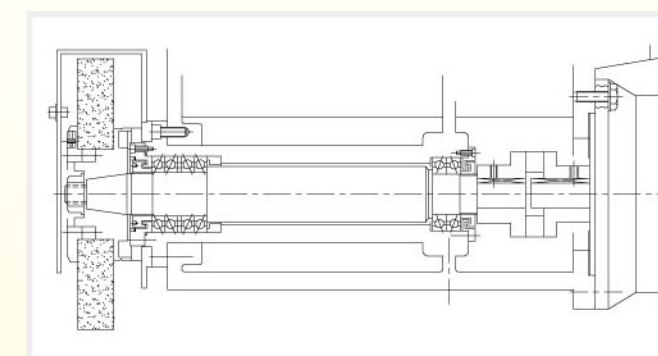
SPINDLE AND WHEELHEAD

The extra rigid designed spindle is suitable for heavy duty grinding. The grinding spindle is supported by six pieces of super precision angular contact, preloaded bearings with permanent lifetime grease lubrication (as shown).

The interchangeable spindle is mounted in the rigid wheelhead. It is driven by a dynamically balanced 15HP motor via a flexible coupling to eliminate deflection and vibration. This permits an exceptional quality grinding finish.



Touch screen panel



PRECISION SPINDLE

6 Bearings P4 Class (NSK or RHP)
Tristar Coupling

TOUCH SCREEN CONTROL PANEL

- The machine is equipped with the PLC touch screen control with easy to learn conversational shop floor language.
- The control has a safety feature that prevents the hydraulics system from being started with out the electromagnetic chuck engaged. This feature will not allow the wheel head to rapid down while the Hydraulic system is in operation.
- Original workpiece zero position is stored in the control memory even if power to the machine is lost.

LUBRICATION SYSTEM WITH HYDRO STATIC WAYS

A fully automatic hydrostatic lubrication system is employed on the slideways. An alarm alerts the operator when the oil gets low preventing damage to the machine.



HYDRAULIC TANK SYSTEM



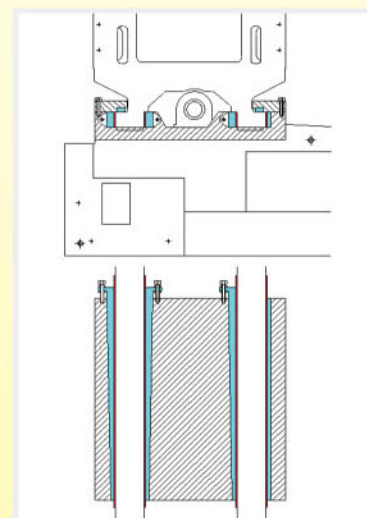
CHILLER FOR HYDRAULIC OIL

A separate hydraulic unit is equipped with a chiller system to avoid transference of heat and vibration from hydraulic system to the machine.

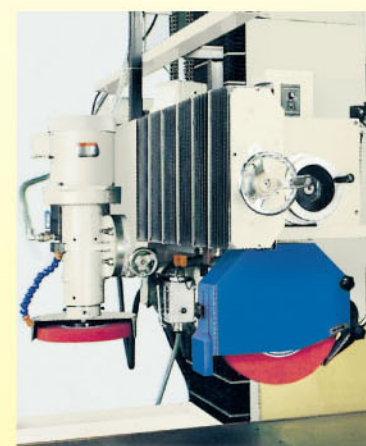


Electric Cabinet

Ergonomically designed with many UL listed components



Needle Roller Bearings Slideways



Vertical Spindle Grinding Equipment
(Optional Accessories)